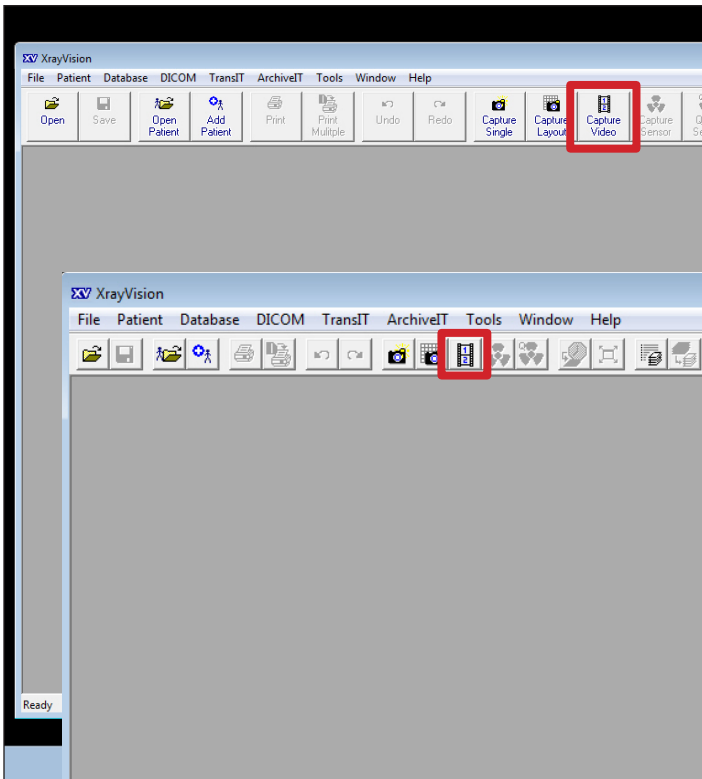
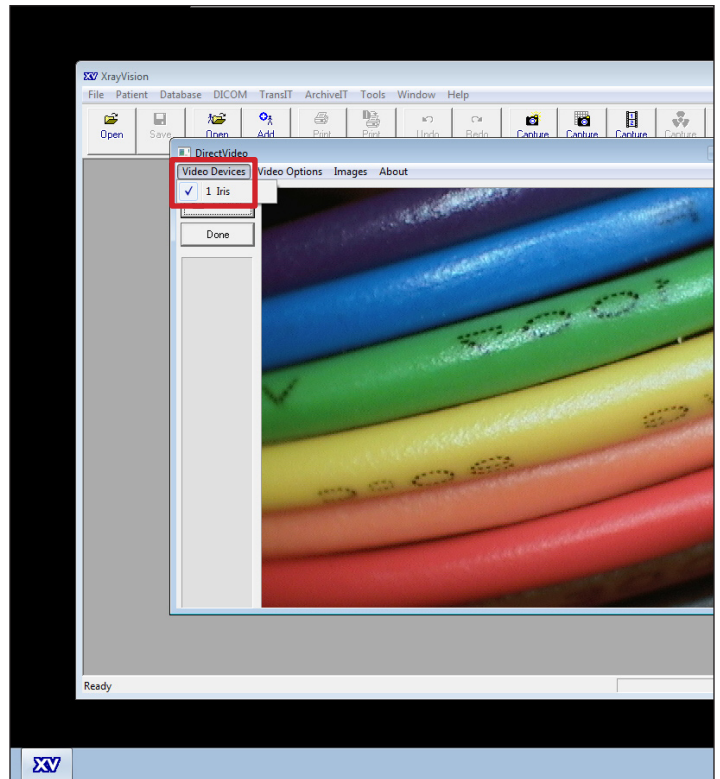


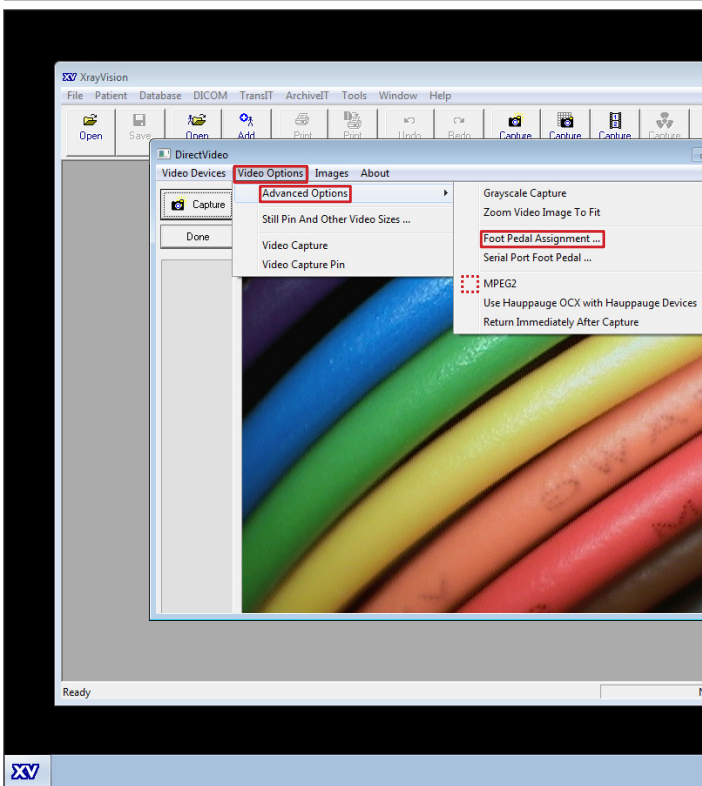
Software Configuration Instructions for Digital Doc Iris Intraoral Camera and Apteryx Imaging



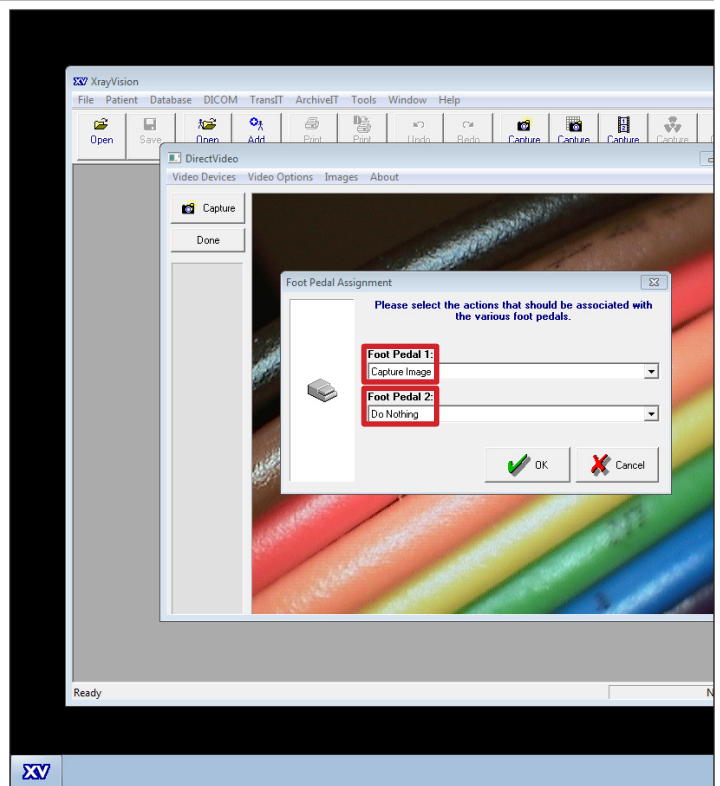
In Apteryx, select **Capture Video** from the toolbar.
(If the icon is not in the toolbar, you may to download the DirectVideo Capture extension through Help, then Updates, Patches, and Add-ons...)



In the **DirectVideo** window that opens, select **Video Devices** from the menu bar, then select **Iris** from the list of installed devices.



Select **Video Options** from the menu bar, then select **Advanced Options**, then **Foot Pedal Assignment...** from the resulting sub-menu. (Be sure there is no check beside MPEG2)



In the **Foot Pedal Assignment** Window, set the following preferences: **Foot Pedal 1: Capture Image**, and **Foot Pedal 2: Do Nothing**. Select **OK**.