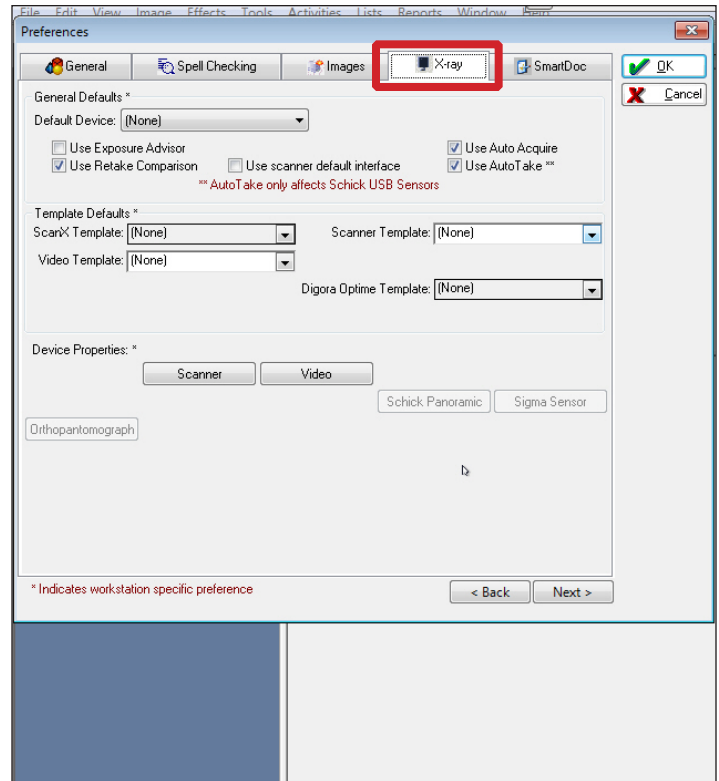
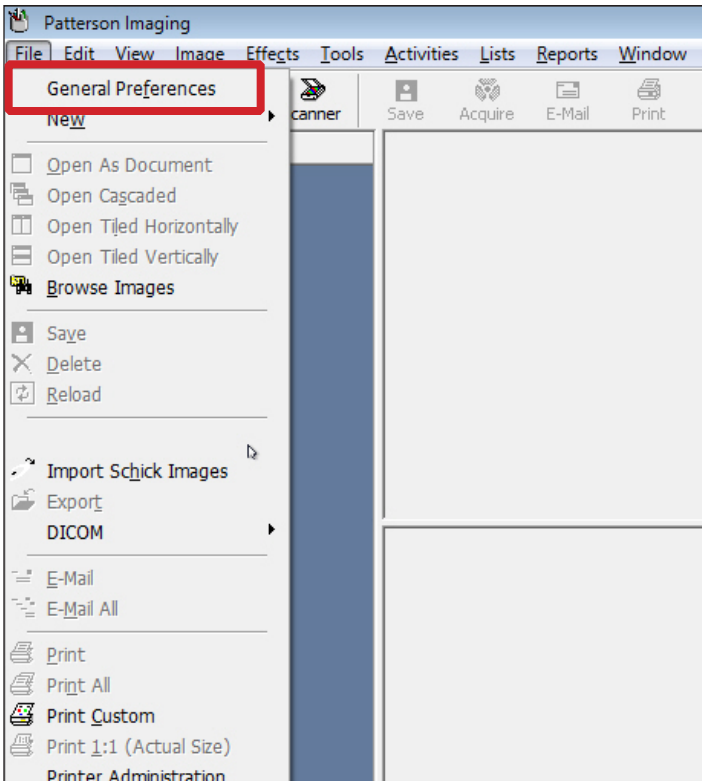
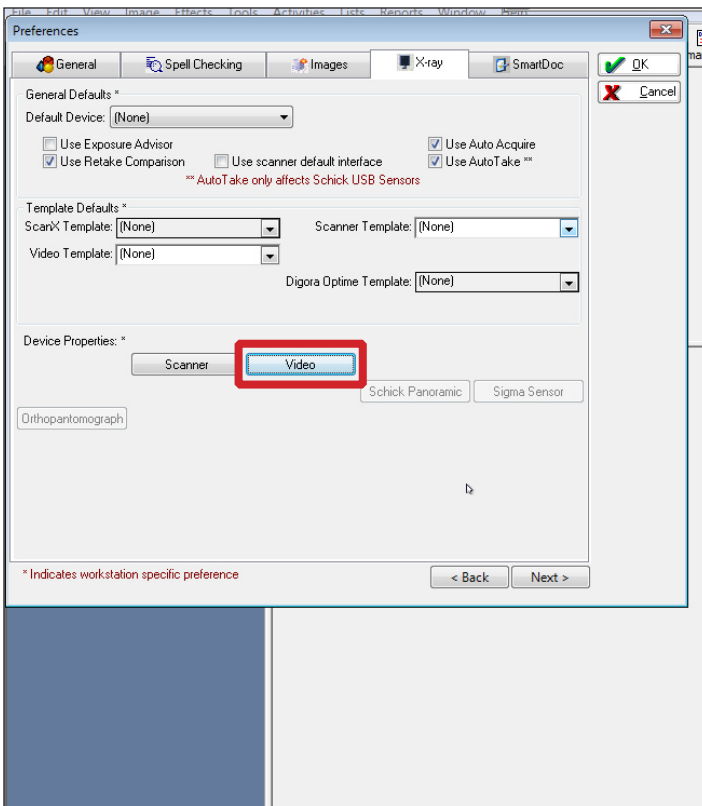


Software Configuration Instructions for Digital Doc Iris Intraoral Camera and Patterson Eaglesoft/Imaging

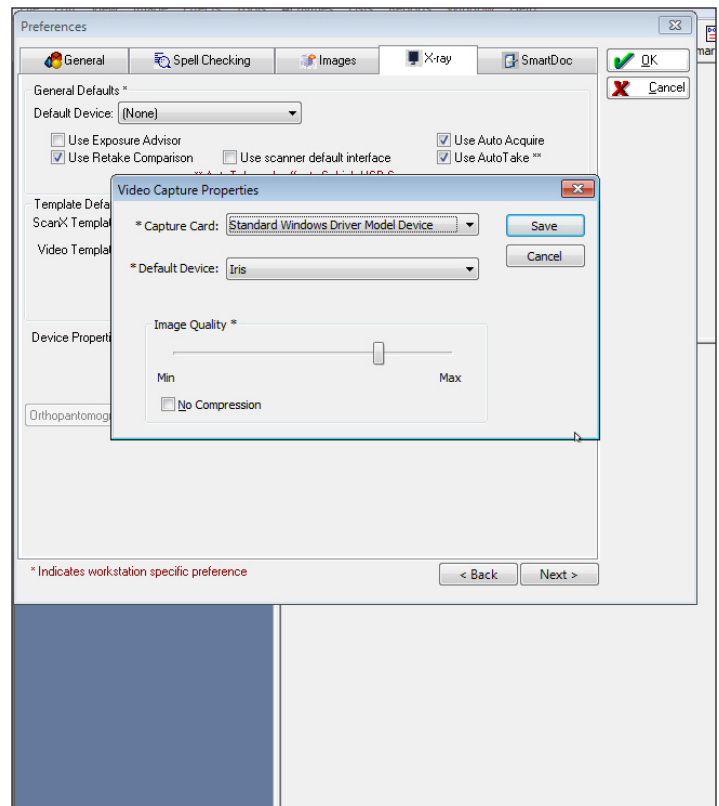


1. From the Patterson Eaglesoft/Imaging home screen, select **File**, then **Preferences/General Preferences**.

2. Select the **X-Ray** tab inside the Preferences Window.



3. Select the **Video** button.



4. For Capture Card, select **Standard Windows Driver Model Device**. For Default Device, select **Iris**. Select **Save**.