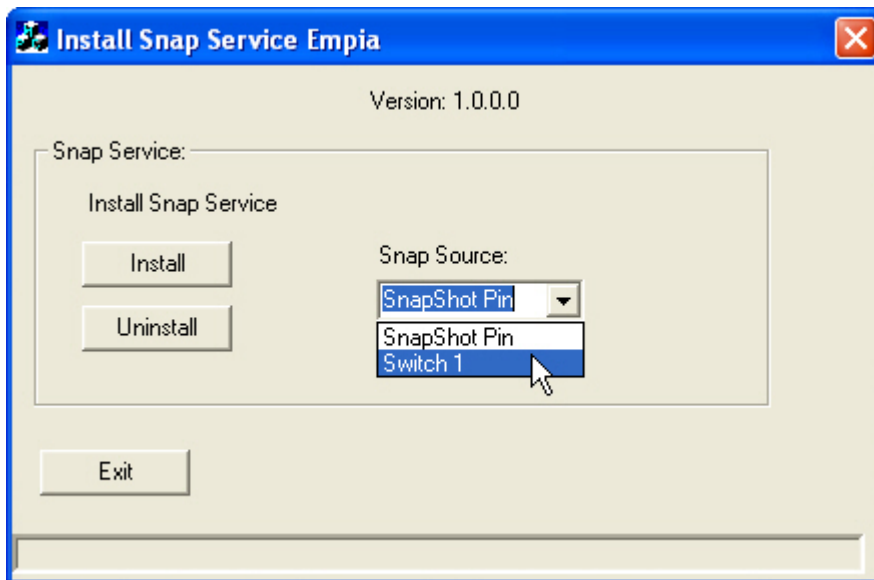


If the icon drivers have been previously installed you must run the uninstall utility and restart the computer after the un-install has finished.

When the new hardware wizard appears browse to the folder "NET2860 Standalone\Install\_3.0.0.5\Install\_Icon\_Cam" to load the camera driver

After the camera driver is loaded browse to the folder "NET2860 Standalone\Install\_1.0.0.0" and run the "InstallSnap.exe" file. Change the Snap Source to "Switch1" then click on install.

At this point you can restart the computer or manually start the Service called "NET Service 4.01



Launch VideoView and when the capture button is pressed on the camera a frozen image should appear over the live image window. To capture more images use the mouse to click on the live video and you can then freeze another image ( this is something we are trying to fix)