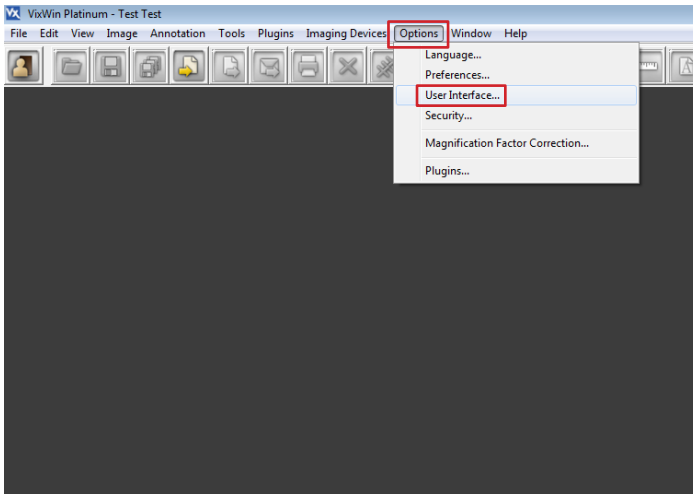
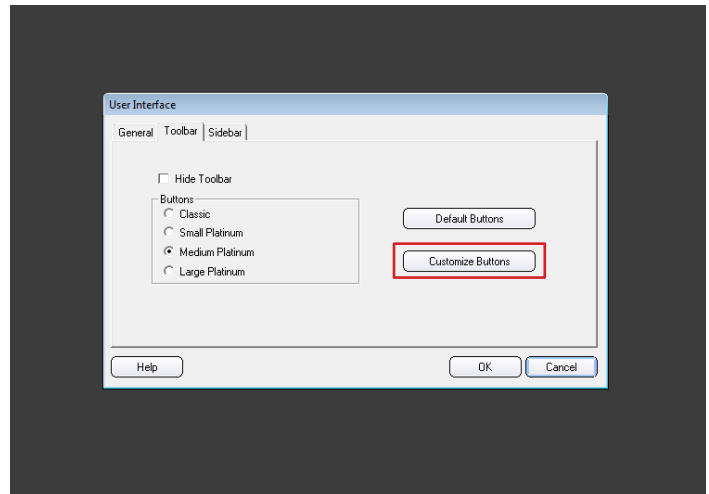


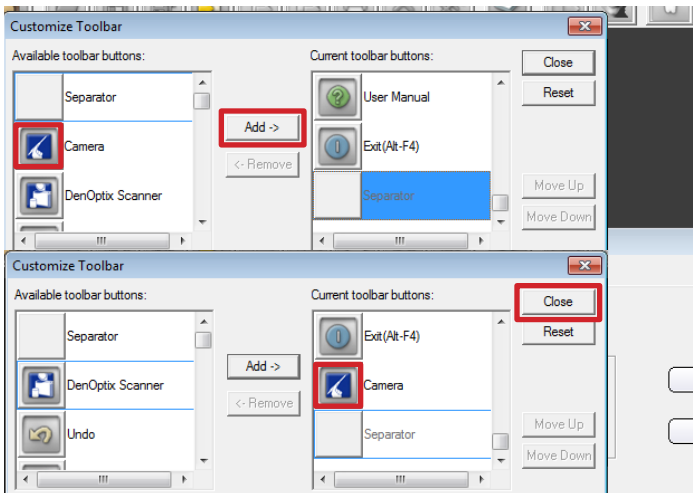
Software Configuration Instructions for Digital Doc Iris Intraoral Camera and VixWin Platinum



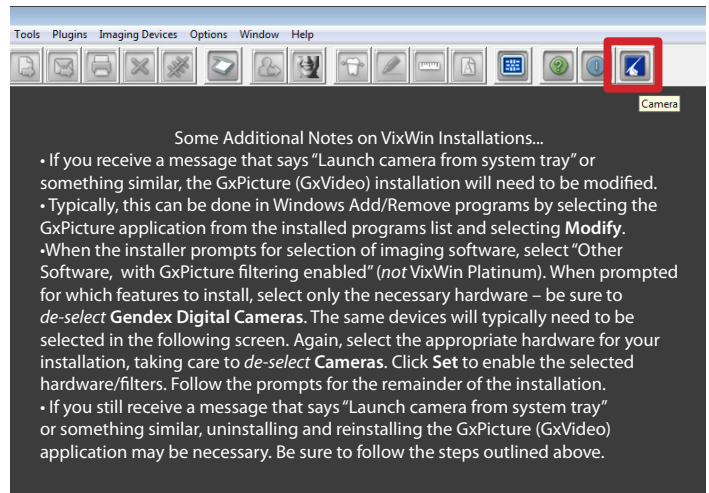
Open any patient. Select **Options**, then **User Interface...** from the resulting menu.



From the **User Interface** window, click on the button labeled **Customize Buttons**.

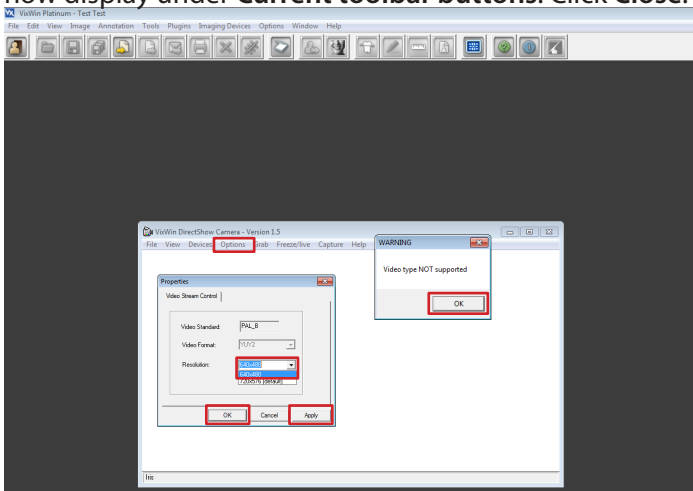


In the **Customize Toolbar** window, find and select the **Camera** in **Available toolbar buttons**. Click **Add-->** It will now display under **Current toolbar buttons**. Click **Close**.

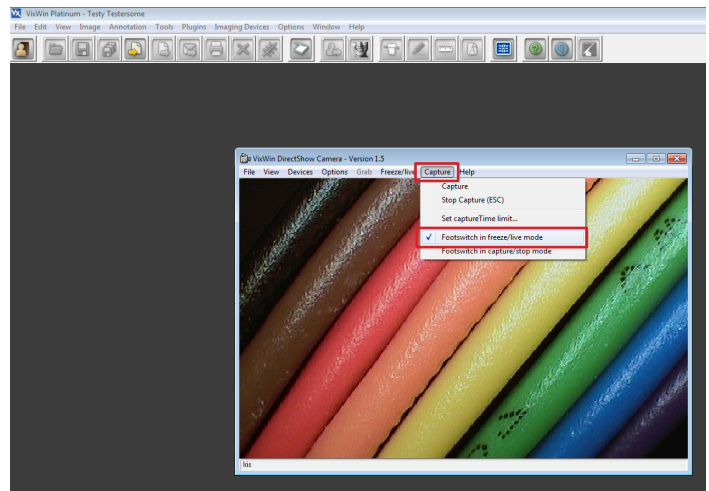


- Some Additional Notes on VixWin Installations...
- If you receive a message that says "Launch camera from system tray" or something similar, the GxPicture (GxVideo) installation will need to be modified.
 - Typically, this can be done in Windows Add/Remove programs by selecting the GxPicture application from the installed programs list and selecting **Modify**.
 - When the installer prompts for selection of imaging software, select "Other Software, with GxPicture filtering enabled" (*not* VixWin Platinum). When prompted for which features to install, select only the necessary hardware – be sure to *de-select* **GenDex Digital Cameras**. The same devices will typically need to be selected in the following screen. Again, select the appropriate hardware for your installation, taking care to *de-select* **Cameras**. Click **Set** to enable the selected hardware/filters. Follow the prompts for the remainder of the installation.
 - If you still receive a message that says "Launch camera from system tray" or something similar, uninstalling and reinstalling the GxPicture (GxVideo) application may be necessary. Be sure to follow the steps outlined above.

You can now select the **Camera** icon in the toolbar to launch the **VixWin DirectShow Camera** video window.



Launch the **Camera** application, in the **WARNING** window click **OK**. Click **Options, Video Capture Pin...** Set **Resolution** to **640x480**. Click **Apply**, then click **OK**.



In the same video window, click **Capture**, and verify **Footswitch in freeze/live mode** is selected. (If **Footswitch in capture/stop mode** is selected, you cannot capture images.)